



**JFK AIRPORT TERMINAL 8** JAMAICA, NEW YORK

# jfk airport

## JFK INTERNATIONAL AIRPORT TERMINAL 8

OWNER American Airlines | LOCATION Jamaica, NY | FACILITY TYPE Airport terminal

### PROJECT BACKGROUND

American Airlines elected to build a new terminal at the JFK International Airport that could accommodate the Airbus A380 superjumbo jet. The superjumbo jet is 240 feet long and contains a two-story flight deck which is capable of holding 840 passengers.

Brandenburg was contracted to perform the asbestos abatement and demolition of the existing American Airlines Terminal 8 including Concourse A, Concourse B, and the Main Terminal. Work was performed without interruption of the ongoing airport operations and in compliance with FAA and Port Authority of New York and New Jersey regulations. Brandenburg utilized dust suppression methods to minimize any hazards or visibility issues.

### SCOPE OF WORK

Removed and disposed of all asbestos-containing material

Provided separation and protection to connecting structures that were to remain

Removed Terminal 8 including Concourse A, Concourse B, and the Main Terminal down to slab

Removed all above-grade concrete supports, bases, and foundations down to adjacent grade elevation

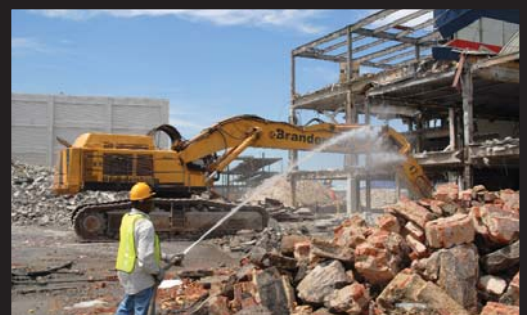
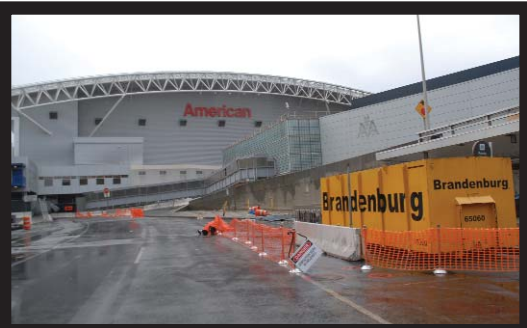
Loaded, transported, and recycled all concrete, brick, and block debris generated

Loaded, transported, and disposed of all construction and demolition debris

Loaded, transported, and recycled all metallic debris

Performed work without interruption of ongoing airport traffic operations

Controlled dust emission to prevent visibility hazards



**Brandenburg®**